



# Shanghai Yuchang Industrial Co., Ltd.

## CYCJET SMART SERIES INKIET PRINTER

· SMART THINKING  
· SMART PRINTING



# CYCJET SMART SERIES INKJET PRINTER

Smart II      Smart I  
Smart II-L    Smart I-L  
Smart II-2L   Smart I-2L  
S88-4L



## INTRODUCE

The CYCJET Smart Series Inkjet Printer are the smallest and simplest printers developed based on TIJ printing technology, featuring fast print speeds and high resolution. It prints variable data including text, batch numbers, production dates and expiry dates, as well as images, and is suitable for a wide range of production lines from packaging machine suppliers to SI. It is driven by the LPC standard control language and can be used as a print engine. Third-party devices can control the printer through the serial port.



## HIGHLIGHTS



- Easy operation, no need of any training.
- ABS plastic, industrial design and stronger.
- Take original driving board to make print effect higher quality.
- Wireless print head verify tech, more stable and intelligent.

# PARAMETERS

Model Item	Handheld Inkjet Printer				Smart Online Inkjet Printer		
	Smart I	Smart I-L	Smart I-2L	S88-4L	Smart II	Smart II-L	Smart II-2L
<b>Print Height</b>	1-12.7mm (Single Printhead)	1-25.4mm (Single Printhead)	1-50mm (Double Printheads)	1-100mm (Four Printheads)	0.8-12.7mm (Single Printhead)	0.8-25.4mm (Single Printhead)	0.8-50mm (Double Printheads)
<b>Net Weight</b>	0.6kg	0.55kg	1.05kg	1.05kg	1.7kg	1.7kg	1.9kg
<b>Package Volume</b>	35x19x23cm	35x19x23cm	35x35x25cm	35x35x25cm	35x35x25cm	35x35x25cm	35x35x25cm
<b>Display</b>	3.5 inch color touch screen			5-inch color touch screen	4.3 inch color touch screen		
<b>Print Rows</b>	1-4 rows. Overall layout height not to exceed 12.7mm	1-6 rows. Overall layout height not to exceed 25.4mm	1-10 rows. Overall layout height not to exceed 50mm	1-40 rows. Overall layout height not to exceed 100mm	1-4 rows. Overall layout height not to exceed 12.7mm	1-6 rows. Overall layout height not to exceed 25.4mm	1-10 rows. Overall layout height not to exceed 50mm
<b>Type</b>	High Resolution/TIJ/Smart Inkjet Printer						
<b>Print Speed</b>	Manual Control			60m/min (Cross direction resolution 100DPI)			
<b>Battery Capacity</b>	1500 mAh (Battery standby about 8 hours; print time about 7 hours)			6000mAh (Standby time 22h)	Plugged in		
<b>Powder</b>	Input AC100V-240V, 50-60HZ. Output DC 18.6V 1.5A			50-60HZ/AC100V-240V, 50-60HZ			
<b>Print Spacing</b>	1mm-3mm, subject to the printing content & ink type						
<b>Print Length</b>	Single file max length 900mm						
<b>Print Resolution</b>	Resolution height is 185DPI. Cross direction resolution 100-600DPI can be adjustment						
<b>Print Fonts</b>	The built-in various font, horizontal bar, vertical bar, dot-matrix, bold font can be free change						
<b>Print Content</b>	Real Date, Real time, Photo, Letter, Shift group, Serial number, Batch number, Symbolise, Lot number Barcode and 2D code can be free print						
<b>Printhead Printing Direction</b>	Side printing (upward and downward print optional)						
<b>Font Library</b>	Standard font library are Chinese & English, and The Spanish, Portuguese, Arabic font library can be optional						
<b>Operator Interfaces and Languages</b>	Chinese, English, Russian, Arabic, French, Spanish, Farsi, Korean, Vietnamese, etc. Total 28 languages.						
<b>Memory Function</b>	More than 1000pcs text can be storage						
<b>Ink Type</b>	Sovlent-based Ink. Supports a wide range of material surfaces such as cardboard boxes, wood, glass, metal and plastics						
	Water-based Ink. Supports surfaces of adsorbent materials such as cardboard boxes and paper.						
<b>Ink Color</b>	Black, White, Red, Blue, Green, Yellow						
<b>Cartridge Capacity</b>	Each ink cartridge can be print 2mm character 500000pcs						
<b>Body Material</b>	ABS Plastic Material						
<b>Operator Interfaces</b>	User friendly UI design, easy to operate						
<b>Humidity Range</b>	10-90% Non-condensing						
<b>Temperature Range</b>	5-40°C						
<b>External Interface</b>	(Optional)USB, photoelectric interface, power interface, USB disk, synchronizer, alarm light						

# INK INTRODUCTION



SBK solvent TIJ ink is designed for track and trace coding and marking and other high-productivity industrial packaging printing applications. The ink provides excellent adhesion and rub resistance, long decap time, excellent optical density, sharpness and barcode readability on semi-porous and non-porous sub-strates such as PET, PVC, PA, BOPP and foils.

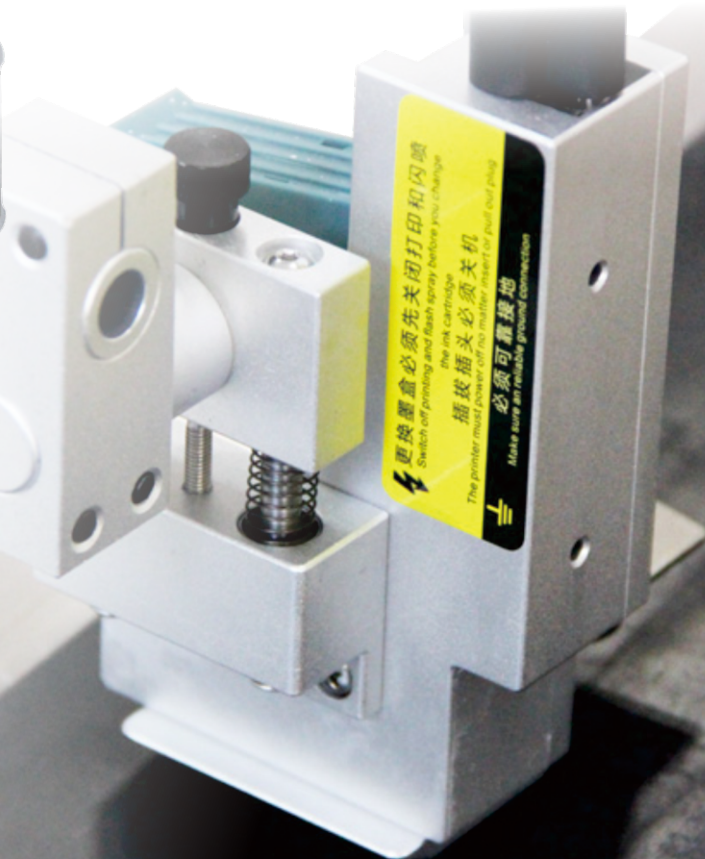
## • INK FEATURES

Fast drying, water resistance, light resistance, abrasion resistance, multi-colour options. Supports clear print results with strong weather resistance.

## • AVAILABLE COLOURS



# DETAILS



## APPLICATIONS

Handheld printers are portable printing devices that can proof on a variety of surfaces.



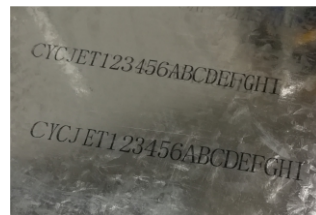
Color steel



Plastic Bag



PVC Pipe



Sheet metal



Carton



Pill box

### • HIGH EFFICIENCY

Handheld printers are easy to operate and print faster, which can improve work efficiency and save time and labour costs.

### • STRONG ADHESION

Inks used in handheld printers often have fast drying properties, supporting strong adhesion on many surfaces. Permanent Coverage.

### • VARIABLE

Handheld printers usually support a wide selection of fonts, patterns and font sizes, which can be personalised according to requirements.

### • FLEXIBILITY

Handheld printers can proof on a variety of surfaces, including plastics, cardboard boxes, textiles, etc., with a wide range of applications.

### • PORTABILITY

Handheld printers are small and lightweight, easy to carry and operate, and suitable for a variety of occasions and environments.

### • PERSONALISATION

The handheld printer supports a wide range of fonts, patterns and font sizes, which can be personalised to meet the needs of different customers.



Plastic barrel



Board



Steel pipe



Woven bag

Simple Friendly  
Reliable Smart

CYCJET SMART SERIES  
INKJET PRINTER



## Contact Us

---

Web: [www.cycjet.com](http://www.cycjet.com)

TEL: +86-21-59970419

FAX: +86-21-59971610

Email: [service@cycjet.com](mailto:service@cycjet.com)

ADD: 1/F, BLDG. 4, NO. 333 HUAGAO RD., HUATING

IND. ZONE, SHANGHAI(201816) P.R.C

