



SOLUTIONS



SERVICE



TECHNOLOGY



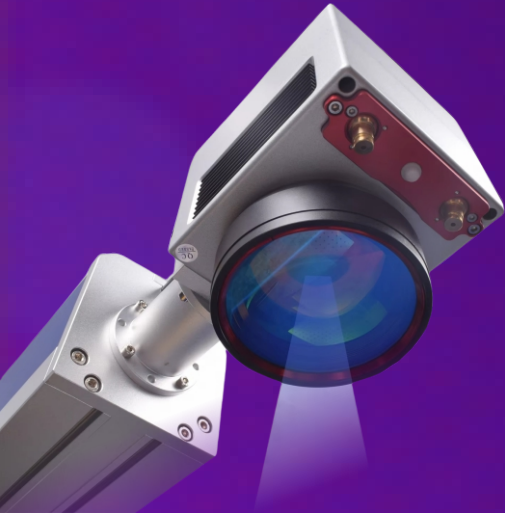
# LC60

## BROCHURE



# LC60 CO<sub>2</sub> laser marker

## marking with the energy of light



CYCJET has developed globally leading laser technology and designed the LC series laser printer, which is the latest application based on good market experience in cosmetics, pharmaceuticals, beverages and beverage packaging, food packaging, cables and plastic pipes. This printer is designed to be compact and highly integrated, suitable for fast and long-term printing on plastic pipes, and can meet 24-hour continuous operation. Intelligent and simple operation, adaptable to different line speeds and materials

## Flexibility, Integration and Performance

### For line integration

- ✔ More than 50 standard beam delivery options, a 360° rotatable scanhead, and customisation options for specific needs.
- ✔ Seamless integration into ERP, WMS, and MES systems.
- ✔ Web-based user interface and easy operation via an intuitive HMI

### For tough environments

- ✔ Dusty, wet, sticky- no problem with IP54/IP65 printheads and IP55 controller for protection.
- ✔ Performs at 45°C ambient temperature.

### For performance

- ✔ Good spot quality, high laser power, maintenance free, Clear markings, not easily worn, no consumables, low cost
- ✔ The lifespan of the laser source is long, with an average time between failures (MTBF) of 40000 hours of use
- ✔ Supports multiple file formats such as PLT, AI, DXF, BMP, JPG, etc

## Permanent traceability coding in excellent quality



PET - ideal for the beverage industry designed for high production rates and with optional IP55 or IP64 certification.



Glass- the **LC60** codes at speed in excellent quality even on tough substrates.



Films (PP, aluminium)-ideal for pots and stickpacks: large marking fields, pin-sharp small characters, gentle coding that helps keep protective barriers intact.



Plastics- smart 2D coding that's ready for GS1 Sunrise: variable data helps unlock the full potential and supports authentication and anti-counterfeiting.

# TECHNICAL SPECIFICATION

<b>Model</b>	LC60
<b>Frame Material</b>	ALUM
<b>Laser Type</b>	Desktop Type CO2 Laser
<b>Power</b>	≥60W
<b>Laser Wavelength</b>	930nm/1064nm/1020nm
<b>Galvanometer Deflection</b>	High precision dual dimensional scanning system
<b>Master Control</b>	Highly integrated board with 10 inch color touch screen
<b>Operating System</b>	LINUX based with high speed marking software
<b>Cooling System</b>	Air Cooling System
<b>Focus Distance</b>	135mm (Customized available)
<b>Minimum Line Width</b>	0.012mm
<b>Repeatability Accurate Positioning</b>	0.003mm
<b>Marking Line Type</b>	Dot matrix, bold, vector all in one (both dot matrix and vector)
<b>Marking Area</b>	Standard 110x110mm (Customized available)
<b>Marking Height</b>	Standard character height 110mm
<b>Marking Length</b>	Unlimited
<b>Typeface</b>	Chinese, English, Arabic, Russian, Spanish, Faris, Italian etc... (Customized available)
<b>Marking Content</b>	Number, logo, image, letter, serial number, system date & time, etc.
<b>File Format</b>	CNF,PLT,JPG,CRD, BMP
<b>Barcode Type</b>	CODE39, CODE128, CODE126, QR, Z-Code
<b>Power Supply</b>	100-220V/50-60HZ
<b>Power Consumption</b>	600W
<b>Gross weight</b>	42kg
<b>Package Size</b>	74X41X43cm
<b>Environmental Requirement</b>	External Temperature 0°C-45°C; humidity≤95%; non-condensing; no shaking

## The Quality Standard of CYCJET Laser marker

GB 7247-87	Radiation safety of laser products, requirements for equipment classification and user's Guide
GB10320-88	Electrical safety of laser equipment and facilities
ISO 9000-3	International software standards
GB/T12123-89	Sales packaging process
IEC 536	Classification of electrical and electronic equipment for protection against electric shock



## Contact Us

---

Web: [www.cycjet.com](http://www.cycjet.com)

TEL: +86-21-59970419

FAX: +86-21-59971610

Email: [service@cycjet.com](mailto:service@cycjet.com)

ADD: 1/F, BLDG. 4, NO. 333 HUAGAO RD., HUATING  
IND. ZONE, SHANGHAI(201816) P.R.C

